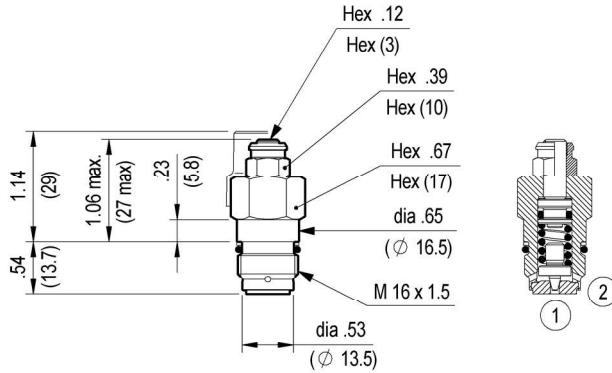


**RELIEF, DIRECT ACTING POPPET TYPE  
SPECIAL CAVITY**



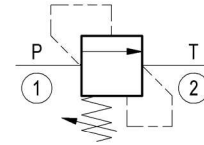
**VS-5-CN**

**04.11.58 - X - 99 - Z**



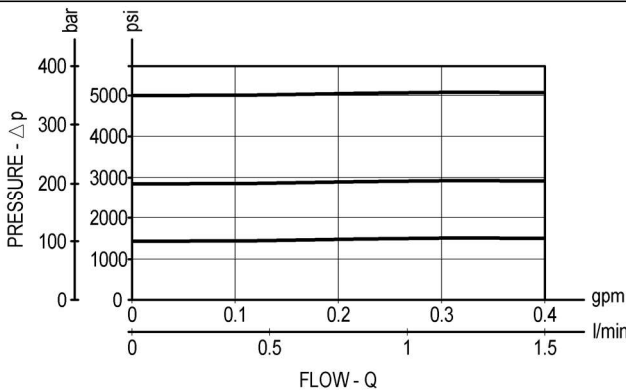
Inches  
(mm)

Flow is blocked from 1 to 2 until pressure increases to meet the selected valve setting, lifting the poppet from its seat and allowing relief flow through 2 to tank. Pressure at 2 is additive to the relief setting of the valve. The cartridge is suitable only for pilot or thermal relief applications.



**TECHNICAL DATA**

Max. pressure:	6600 psi	(460 bar)
Max. flow:	0.4 gpm	(1.5 l/min)
Special Cavity :	348 (see page CT.S.003.U)	
Installation torque :	20-24 ft-lb	(27-33 Nm)
Weight:	0.110 lbs	(0.050 Kg)



**X ADJUSTMENTS**

**03** Leakproof hex. socket screw



**Z SPRINGS**

Z	Adj. press. range psi (bar)	Press. increase psi / turn (bar/turn)	Std. setting cracking pressure psi (bar)
<b>10</b>	350-1450 (25-100)	590 (40.7)	1450 (100)
<b>20</b>	1450-2900 (100-200)	1059 (73)	2900 (200)
<b>35</b>	2900-5000 (200-350)	2422 (167)	5000 (350)
<b>46</b>	5000-6600 (350-460)	3306 (228)	5000 (350)

**OPTIONS**

Ordering code

Description

11.04.31.001

Tamper resistant cap

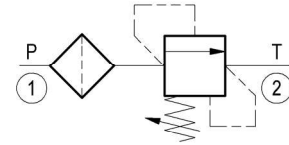
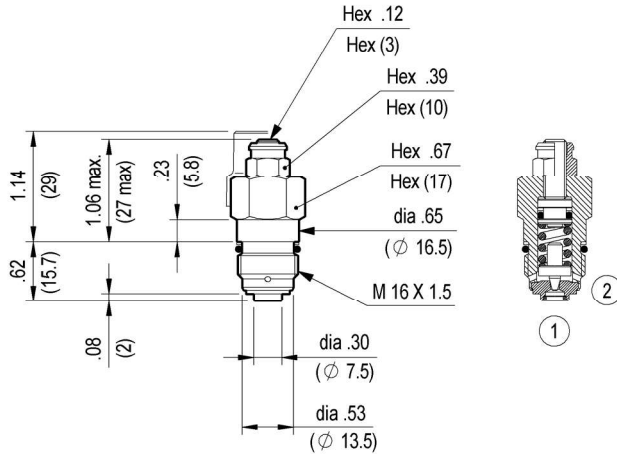


Special settings available. Contact factory authorized representative for ordering code.

**RELIEF, DIRECT ACTING POPPET TYPE  
 SPECIAL CAVITY**

**VS-5-CF**

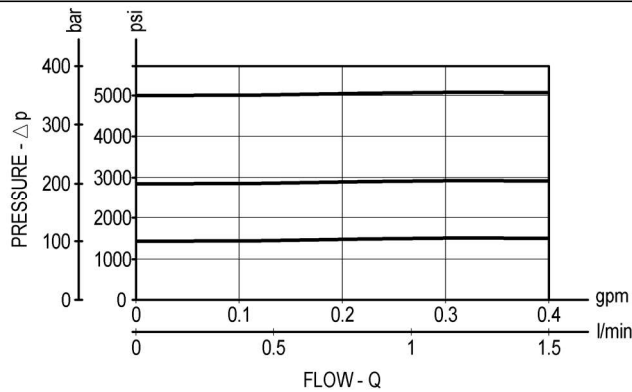
**04.11.57 - X - 99 - Z**



**TECHNICAL DATA**

Max. pressure:	6600 psi	(460 bar)
Max. flow:	0.4 gpm	(1.5 l/min)
Special Cavity :	348 (see page CT.S.003.U)	
Installation torque :	20-24 ft-lb	(27-33 Nm)
Weight:	0.110 lbs	(0.050 Kg)

Flow is blocked from 1 to 2 until pressure increases to meet the selected valve setting, lifting the poppet from its seat and allowing relief flow through 2 to tank. Pressure at 2 is additive to the relief setting of the valve. The cartridge is suitable only for pilot or thermal relief applications.



**X ADJUSTMENTS**

**03** Leakproof hex. socket screw



**Z SPRINGS**

Z	Adj. press. range psi (bar)	Press. increase psi / turn (bar/turn)	Std. setting cracking pressure psi (bar)
<b>10</b>	350-1450 (25-100)	590 (40.7)	1450 (100)
<b>20</b>	1450-2900 (100-200)	1059 (73)	2900 (200)
<b>35</b>	2900-5000 (200-350)	2422 (167)	5000 (350)
<b>46</b>	5000-6600 (350-460)	3306 (228)	5000 (350)

**OPTIONS**

Ordering code

Description

11.04.31.001

Tamper resistant cap



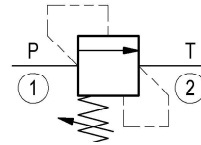
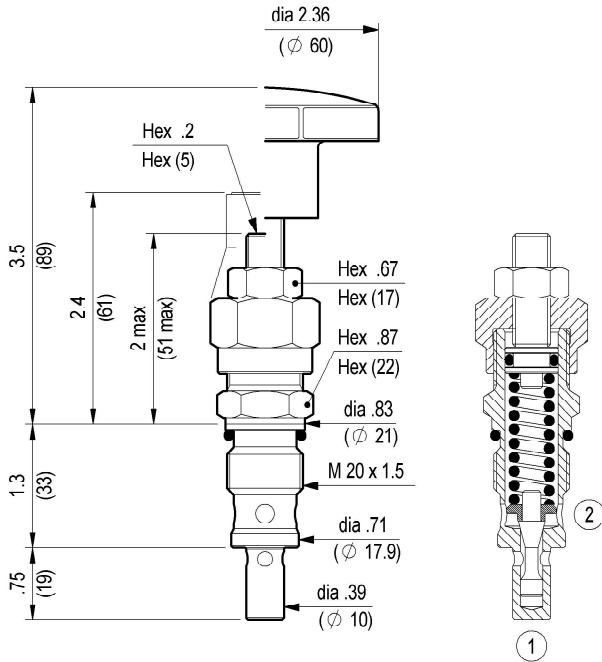
Special settings available. Contact factory authorized representative for ordering code.

**RELIEF, DIRECT ACTING GUIDED POPPET TYPE  
SPECIAL CAVITY**



**VS-30**

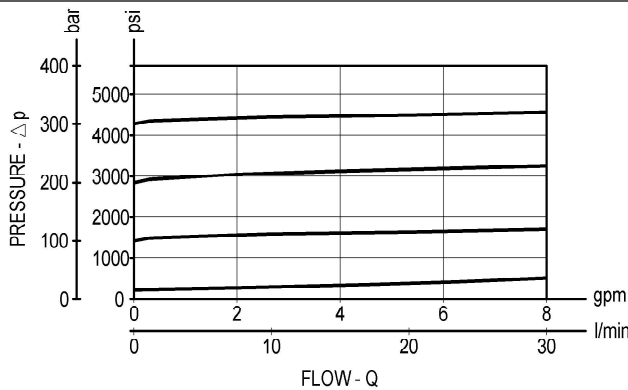
**04.11.18 - X - 99 - Z**



**TECHNICAL DATA**

Max. pressure:	5000 psi	(350 bar)
Max. flow:	8 gpm	(30 l/min)
Special cavity :	008 (see page CT.S.001.U)	
Installation torque :	33-37 ft-lb	(45-50 Nm)
Weight:	0.375 lbs	(0.170 Kg)

Flow is blocked from 1 to 2 until pressure increases to meet the selected valve setting, lifting the poppet from its seat and allowing relief flow through 2 to tank. Pressure at 2 is additive to the relief setting of the valve. The unique Oil Control poppet design provides enhanced stability at all flows and pressures.



**X ADJUSTMENTS**

<b>03</b>	Leakproof hex. socket screw	
<b>04</b>	Handknob and locknut	

**SPRINGS**

<b>Z</b>	Adj. press. range psi (bar)	Press. increase psi / turn (bar/turn)	Standard setting psi (bar) (Q=5 l/min)	Ordering code	Color
<b>05</b>	75-725 (5-50)	174 (12)	725 (50)	03.51.01.077	black
<b>10</b>	435-1450 (30-100)	348 (24)	1450 (100)	03.51.01.076	blue
<b>20</b>	725-3000 (50-210)	682 (47)	2900 (200)	03.51.01.075	green
<b>35</b>	1450-5000 (100-350)	1189 (82)	5000 (350)	03.51.01.059	yellow

**OPTIONS**

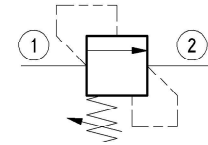
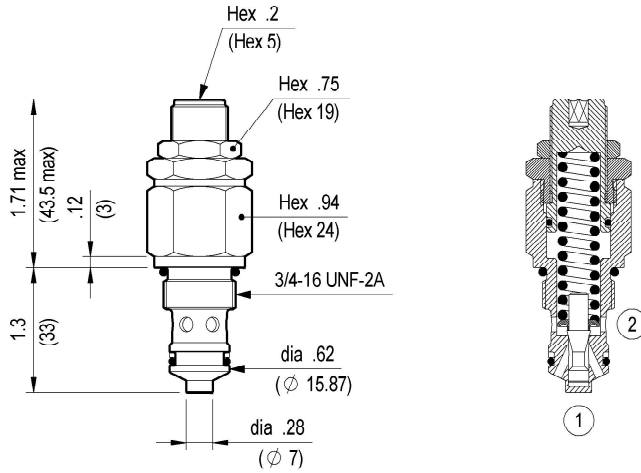
Ordering code	Description
03.05.01.003	Sealing cap
11.04.23.003	Tamper resistant cap

Special settings available. Contact factory authorized representative for ordering code.

**RELIEF, DIRECT ACTING GUIDED POPPET TYPE  
 SPECIAL CAVITY**

**VMD1.025**

**0T.M1.02 - X - 99 - Z**



**TECHNICAL DATA**

Max. pressure: 5000 psi (350 bar)

Max. flow: 9 gpm (35 l/min)

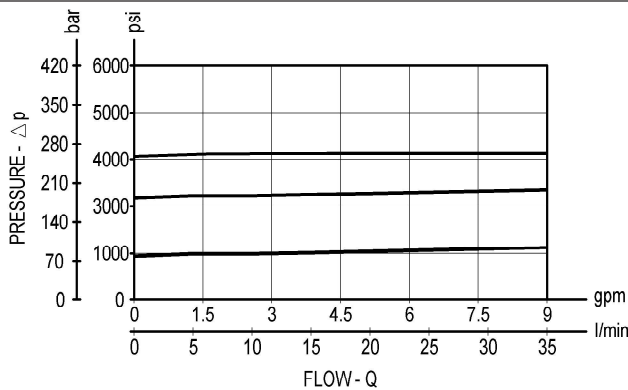
Cavity : 019-E (see page CT.S.006.U)

Installation torque : 30-33 ft-lb (40-45 Nm)

Weight: 0.287 lbs (0.130 Kg)

Inches  
(mm)

Flow is blocked from 1 to 2 until pressure increases to meet the selected valve setting, lifting the poppet from its seat and allowing relief flow through port 2 to tank. Pressure at port 2 is additive to the relief setting of the valve. The unique Oil Control poppet design provides enhanced stability at all flows and pressures.



**X**

**ADJUSTMENTS**

**03**

Leakproof hex. socket screw

**SPRINGS**

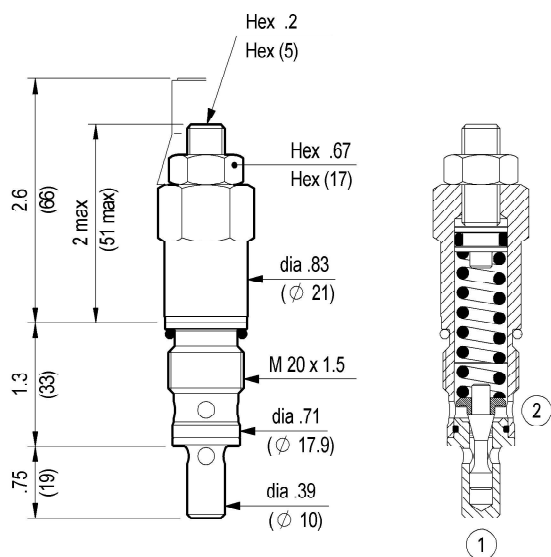
<b>Z</b>	Adj. press. range psi (bar)	Press. increase psi / turn (bar/turn)	Standard setting psi (bar) (Q=5 l/min)		
<b>10</b>	350-1750 (25-120)	239 (16.5)	1450 (100)		
<b>20</b>	580-2900 (40-200)	384 (26.5)	2600 (180)		
<b>35</b>	2900-5000 (200-350)	740 (51)	5000 (350)		



**RELIEF, DIRECT ACTING GUIDED POPPET TYPE  
HARDENED SEAT  
SPECIAL CAVITY**

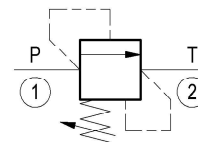
**VS-30-NCF**

**04.11.18 - X - 09 - Z**



Inches  
(mm)

Flow is blocked from 1 to 2 until pressure increases to meet the selected valve setting, lifting the poppet from its seat and allowing relief flow through 2 to tank. Pressure at 2 is additive to the relief setting of the valve. The unique Oil Control poppet design provides enhanced stability at all flows and pressures. A hardened seat is provided for increased durability in high-pressure, high-cycle applications.



**TECHNICAL DATA**

Max. pressure: 6000 psi (420 bar)

Max. flow: 8 gpm (30 l/min)

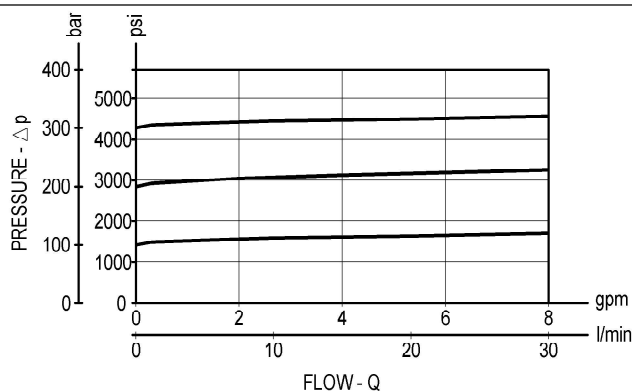
Special cavity : 008 (see page CT.S.001.U)

Hardened seat

Installation torque : 33-37 ft-lb (45-50 Nm)

Weight: 0.375 lbs (0.170 Kg)

Note: the pressure setting must be done after installation, because the spring cannot be compressed while the cartridge is out of the cavity. For the same reason the threaded adjuster must be fully released prior to unscrewing the cartridge from cavity.



**X ADJUSTMENTS**

**03** Leakproof hex. socket screw



**Z SPRINGS**

Z	Adj. press. range psi (bar)	Press. increase psi / turn (bar/turn)			
<b>05</b>	75-725 (5-50)	174 (12)			
<b>20</b>	725-3000 (50-210)	682 (47)			
<b>35</b>	1450-5000 (100-350)	1189 (82)			
<b>42</b>	1450-6000 (100-420)	1552 (107)			

**OPTIONS**

Ordering code

Description

11.04.23.003

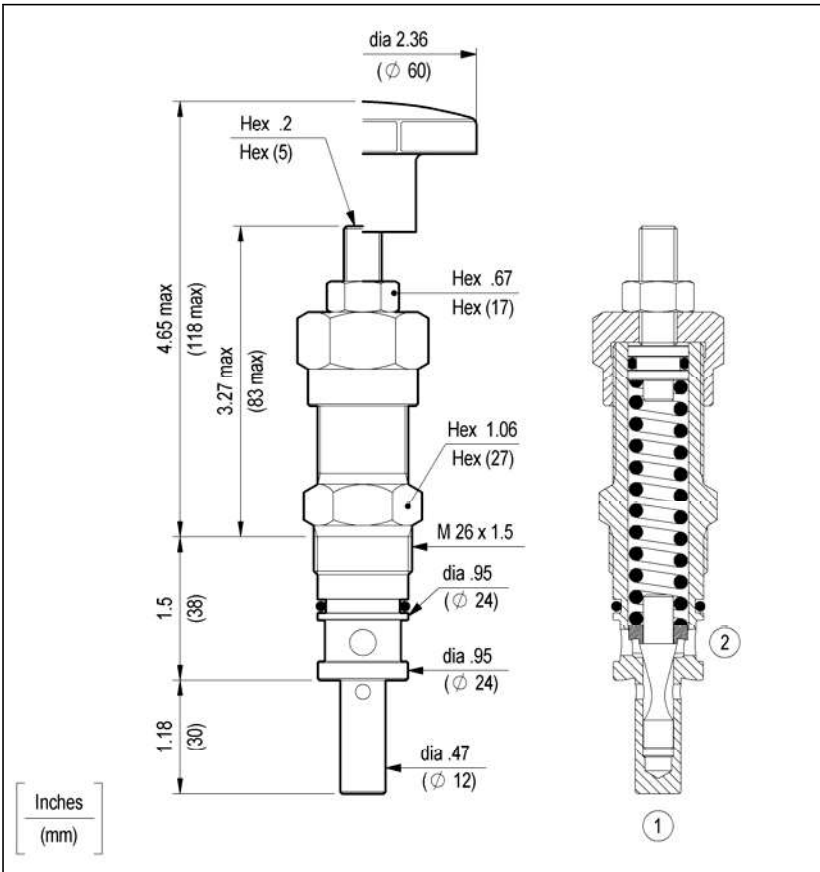


Tamper resistant cap

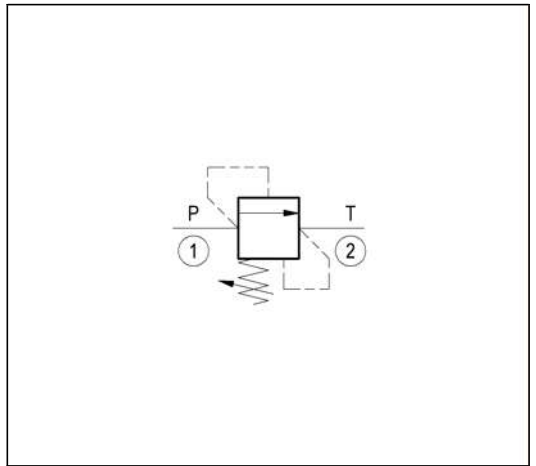
**RELIEF, DIRECT ACTING GUIDED POPPET TYPE  
 SPECIAL CAVITY**

**VS-80**

**04.11.05 - X - 99 - Z**

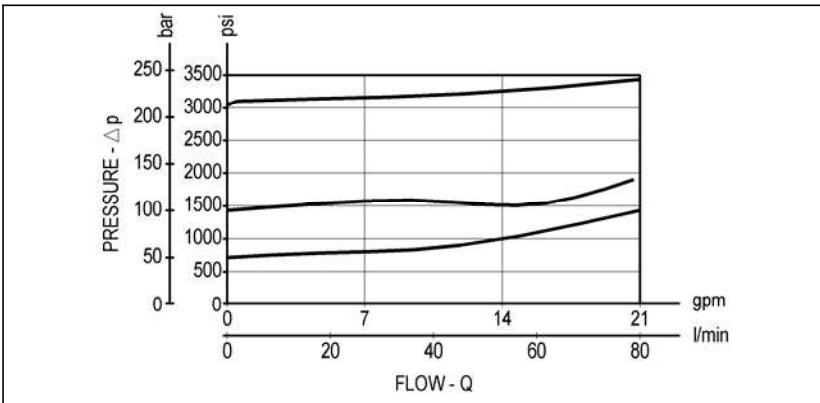


Flow is blocked from 1 to 2 until pressure increases to meet the selected valve setting, lifting the poppet from its seat and allowing relief flow through 2 to tank. Pressure at 2 is additive to the relief setting of the valve. The unique Oil Control poppet design provides enhanced stability at all flows and pressures.



**TECHNICAL DATA**

Max. pressure:	3600 psi	(250 bar)
Max. flow:	21 gpm	(80 l/min)
Special cavity :	009 (see page CT.S.001.U)	
Installation torque :	61-68 ft-lb	(83-92 Nm)
Weight:	0.772 lbs	(0.350 Kg)



<b>X</b>	<b>ADJUSTMENTS</b>	
<b>03</b>	Leakproof hex. socket screw	
<b>04</b>	Handknob and locknut	

<b>Z</b>	<b>SPRINGS</b>			
	Adj. press. range psi (bar)	Press. increase psi / turn (bar/turn)	Standard setting psi (bar) (Q=5 l/min)	
<b>05</b>	75-725 (5-50)	87 (6)	725 (50)	
<b>10</b>	435-1450 (30-100)	174 (12)	1450 (100)	
<b>20</b>	1160-3600 (80-250)	392 (27)	2900 (200)	

<b>OPTIONS</b>	
Ordering code	Description
03.05.01.003	Sealing cap
11.04.23.003	Tamper resistant cap

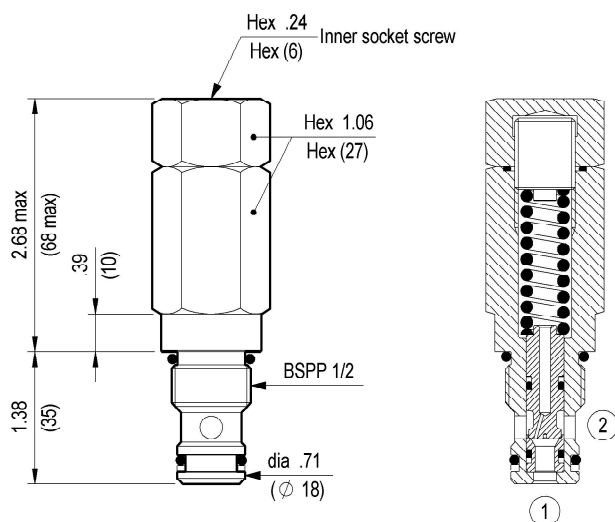
Special settings available. Contact factory authorized representative for ordering code.



**RELIEF, DIRECT ACTING POPPET TYPE  
DIFFERENTIAL AREA  
SPECIAL CAVITY**

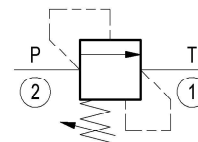
**VSD-50**

**04.15.01 - X - 99 - Z**



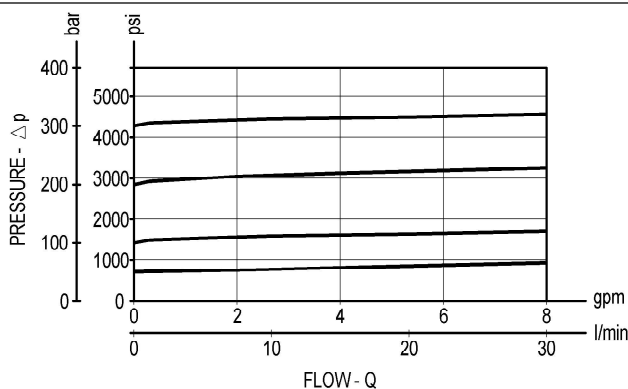
Inches  
(mm)

Flow is blocked from 2 to 1 until pressure increases to meet the selected valve setting, lifting the poppet from its seat and allowing relief flow through 1 to tank. Pressure at 1 is additive to the relief setting of the valve. The combination of stable poppet design and hardened seat provide excellent response, hysteresis and leakage characteristics.



**TECHNICAL DATA**

Max. pressure:	5000 psi	(350 bar)
Max. flow:	8 gpm	(30 l/min)
Special cavity :	006 (see page CT.S.001.U)	
Installation torque :	71-80 ft-lb	(96-108 Nm)
Weight:	0.750 lbs	(0.340 Kg)



**X ADJUSTMENTS**

**03** Leakproof inner hex. socket screw



**Z SPRINGS**

Z	Adj. press. range psi (bar)	Press. increase psi / turn (bar/turn)	Standard setting psi (bar) (Q=5 l/min)	Ordering code	Color
<b>05</b>	75-725 (5-50)	218 (15)	725 (50)	03.51.01.077	black
<b>10</b>	435-1450 (30-100)	435 (30)	1450 (100)	03.51.01.076	blue
<b>20</b>	725-3000 (50-210)	870 (60)	2900 (200)	03.51.01.075	green
<b>35</b>	1450-5000 (100-350)	1450 (100)	5000 (350)	03.51.01.059	yellow

**OPTIONS**

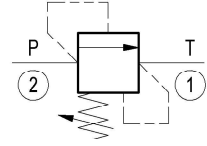
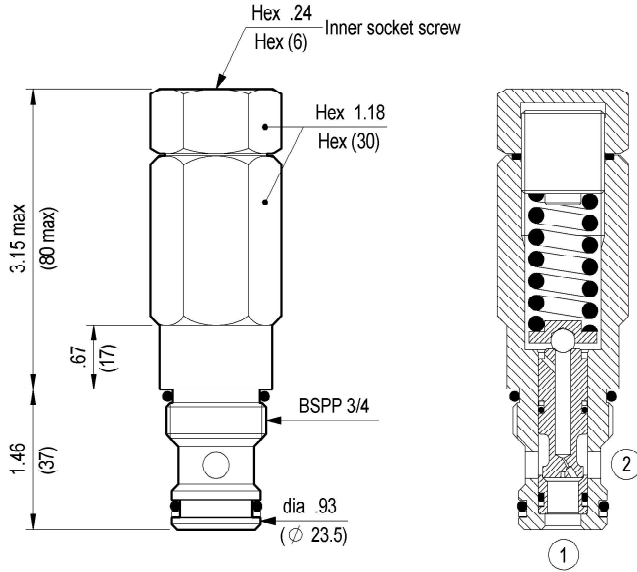
Ordering code	Description
03.05.01.001	 Sealing cap

Special settings available. Contact factory authorized representative for ordering code.

**RELIEF, DIRECT ACTING POPPET TYPE  
DIFFERENTIAL AREA  
SPECIAL CAVITY**

**VSD-150**

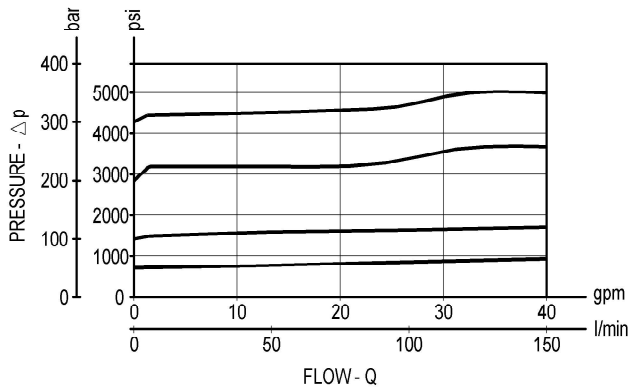
**04.15.02 - X - 99 - Z**



**TECHNICAL DATA**

Max. pressure:	5000 psi	(350 bar)
Max. flow:	40 gpm	(150 l/min)
Special cavity :	005 (see page CT.S.001.U)	
Installation torque :	111-120 ft-lb	(150-162 Nm)
Weight:	1.047 lbs	(0.475 Kg)

Flow is blocked from 2 to 1 until pressure increases to meet the selected valve setting, lifting the poppet from its seat and allowing relief flow through 1 to tank. Pressure at 1 is additive to the relief setting of the valve. The combination of stable poppet design and hardened seat provide excellent response, hysteresis and leakage characteristics.



**X ADJUSTMENTS**

<b>03</b>	Leakproof inner hex. socket screw	
-----------	-----------------------------------	--

**SPRINGS**

<b>Z</b>	Adj. press. range psi (bar)	Press. increase psi / turn (bar/turn)	Standard setting psi (bar) (Q=5 l/min)	Ordering code	Color
<b>05</b>	75-725 (5-50)	232 (16)	725 (50)	03.51.01.150	black
<b>10</b>	580-1450 (40-100)	479 (33)	1450 (100)	03.51.01.151	blue
<b>20</b>	1000-3000 (70-210)	986 (68)	2900 (200)	03.51.01.152	green
<b>35</b>	1900-5000 (130-350)	1523 (105)	5000 (350)	03.51.01.142	yellow

**OPTIONS**

Ordering code	Description
03.05.01.001	 Sealing cap

Special settings available. Contact factory authorized representative for ordering code.

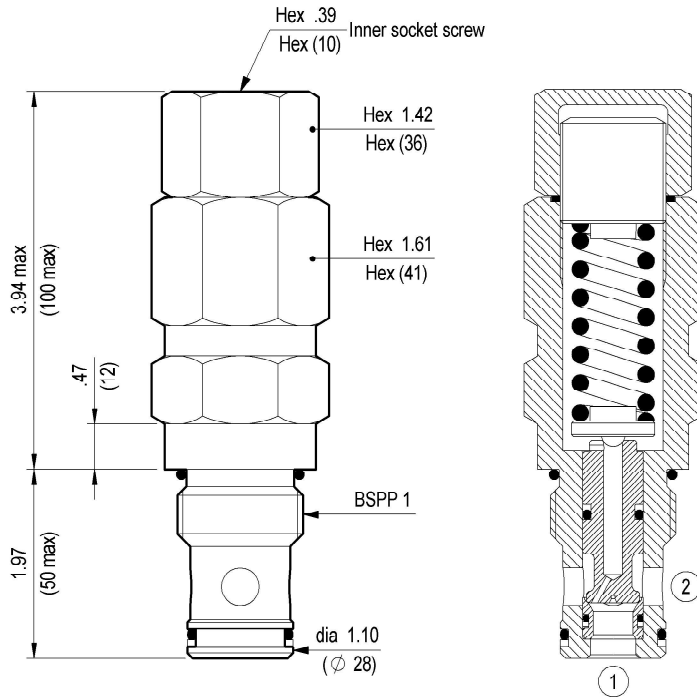




**RELIEF, DIRECT ACTING POPPET TYPE  
DIFFERENTIAL AREA  
SPECIAL CAVITY**

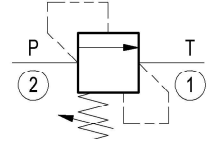
**VSD-250**

**04.15.03 - X - 99 - Z**



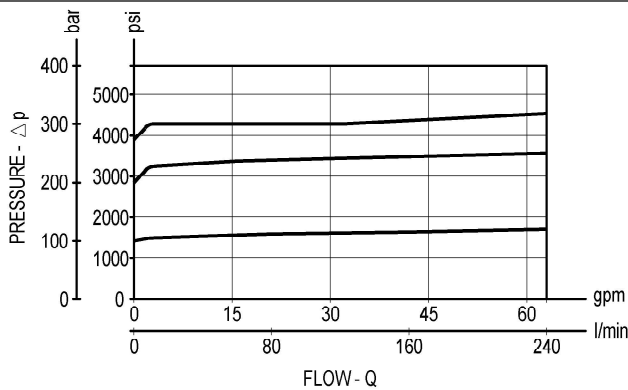
Inches  
(mm)

Flow is blocked from 2 to 1 until pressure increases to meet the selected valve setting, lifting the poppet from its seat and allowing relief flow through 1 to tank. Pressure at 1 is additive to the relief setting of the valve. The combination of stable poppet design and hardened seat provide excellent response, hysteresis and leakage characteristics.



**TECHNICAL DATA**

Max. pressure:	5000 psi	(350 bar)
Max. flow:	63 gpm	(240 l/min)
Special cavity :	003 (see page CT.S.001.U)	
Installation torque :	154-173 ft-lb	(208-234 Nm)
Weight:	2.205 lbs	(1.000 Kg)



**X**

**ADJUSTMENTS**

**03**

Leakproof inner hex. socket screw



**Z**

**SPRINGS**

Adj. press. range psi (bar)	Press. increase psi / turn (bar/turn)	Standard setting psi (bar) (Q=5 l/min)	Ordering code	Color
<b>10</b> 500-1450 (35-100)	261 (18)	1450 (100)	03.51.01.068	blue
<b>20</b> 1000-3000 (70-210)	522 (36)	2900 (200)	03.51.01.067	green
<b>35</b> 1750-5000 (120-350)	899 (62)	5000 (350)	03.51.01.057	yellow

**OPTIONS**

Ordering code

Description

03.05.01.005



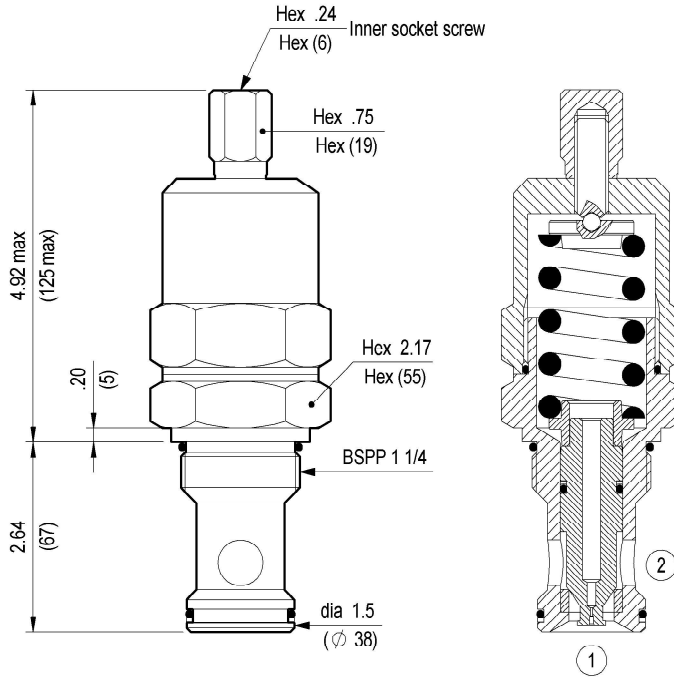
Sealing cap

Special settings available. Contact factory authorized representative for ordering code.

**RELIEF, DIRECT ACTING POPPET TYPE  
 DIFFERENTIAL AREA  
 SPECIAL CAVITY**

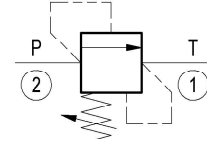
**VSD-350**

**04.15.04 - X - 99 - Z**



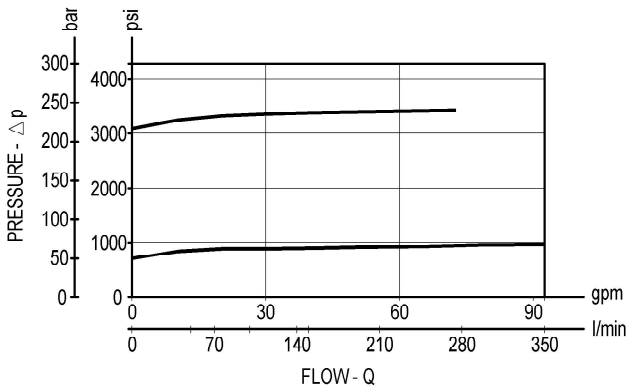
Inches  
(mm)

Flow is blocked from 2 to 1 until pressure increases to meet the selected valve setting, lifting the poppet from its seat and allowing relief flow through 1 to tank. Pressure at 1 is additive to the relief setting of the valve. The combination of stable poppet design and hardened seat provide excellent response, hysteresis and leakage characteristics.



**TECHNICAL DATA**

Max. pressure:	3000 psi	(210 bar)
Max. flow:	93 gpm	(350 l/min)
Special cavity :	004 (see page CT.S.001.U)	
Installation torque :	181-196 ft-lb	(245-265 Nm)
Weight:	3.263 lbs	(1.480 Kg)



**X**

**ADJUSTMENTS**

**03**

Leakproof inner hex. socket screw



**SPRINGS**

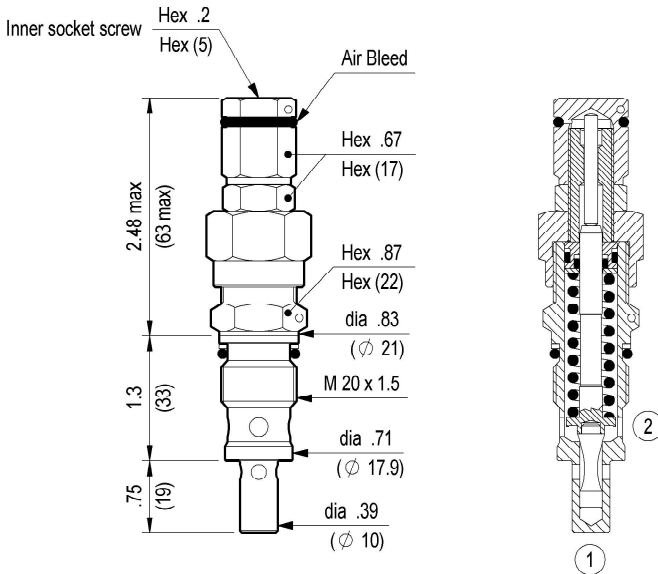
<b>Z</b>	Adj. press. range psi (bar)	Press. increase psi / turn (bar/turn)	Standard setting psi (bar) (Q=5 l/min)	Ordering code	Color
<b>05</b>	220-725 (15-50)	131 (9)	725 (50)	03.51.01.065	black
<b>20</b>	1160-3000 (80-210)	537 (37)	2900 (200)	03.51.01.044	green

Special settings available. Contact factory authorized representative for ordering code.

**RELIEF, DIRECT ACTING POPPET TYPE  
PRESSURE COMPENSATED  
SPECIAL CAVITY**

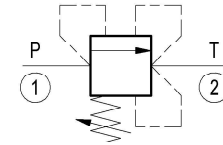
**VS-30-CC**

**04.11.27 - X - 99 - Z**



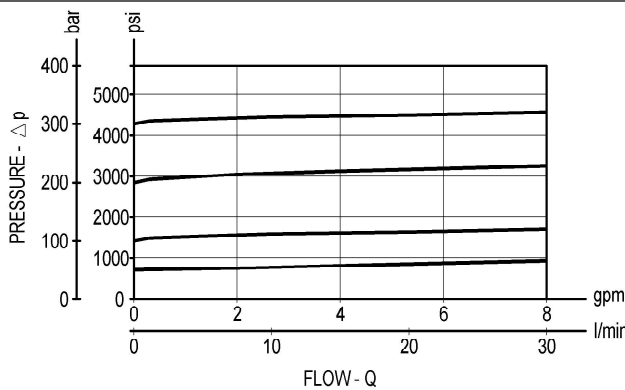
Inches  
(mm)

Flow is blocked from 1 to 2 until pressure increases to meet the selected valve setting, lifting the poppet from its seat and allowing relief flow through 2 to tank. The valve applies a balanced piston design allowing consistent relief operation at the valve setting independent of back-pressure at 2. The unique Oil Control poppet design provides enhanced stability at all flows and pressures.



**TECHNICAL DATA**

Max. pressure:	5000 psi	(350 bar)
Max. flow:	8 gpm	(30 l/min)
Special cavity :	008 (see page CT.S.001.U)	
Installation torque :	34-38 ft-lb	(46-51 Nm)
Weight:	0.375 lbs	(0.170 Kg)



**X ADJUSTMENTS**

<b>03</b>	Leakproof inner hex. socket screw	
-----------	-----------------------------------	--

**Z SPRINGS**

Z	Adj. press. range psi (bar)	Press. increase psi / turn (bar/turn)	Standard setting psi (bar) (Q=5 l/min)	Ordering code	Color
<b>05</b>	75-725 (5-50)	160 (11)	725 (50)	03.51.01.077	black
<b>10</b>	435-1450 (30-100)	334 (23)	1450 (100)	03.51.01.076	blue
<b>20</b>	725-3000 (50-210)	682 (47)	2900 (200)	03.51.01.075	green
<b>35</b>	1450-5000 (100-350)	1189 (82)	5000 (350)	03.51.01.059	yellow

**OPTIONS**

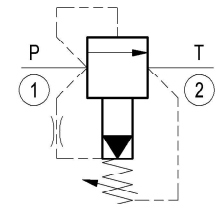
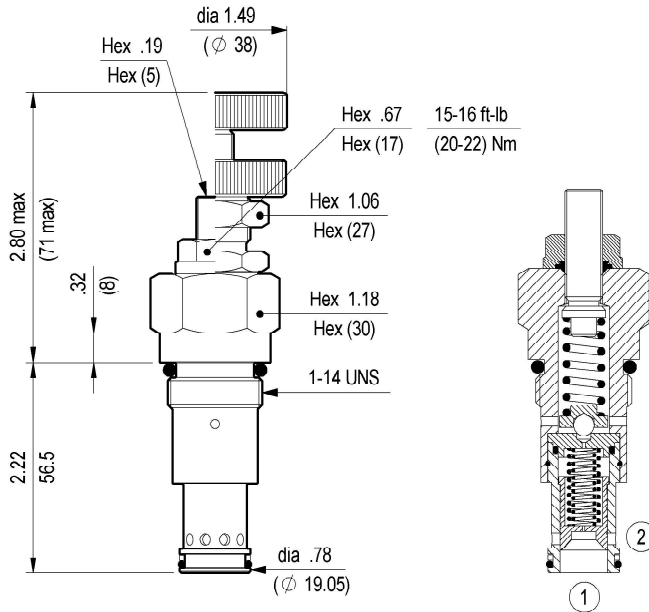
Ordering code	Description
03.05.01.002	 Sealing cap

Special settings available. Contact factory authorized representative for ordering code.

**RELIEF, PILOT OPERATED SPOOL TYPE  
 SPECIAL CAVITY**

**VSP-150**

**04.12.04 - X - 99 - Z**

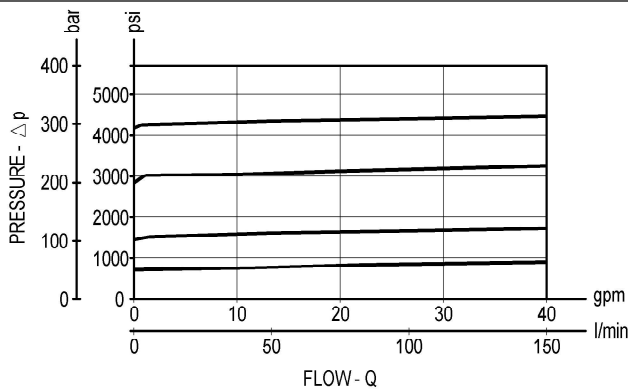


**TECHNICAL DATA**

Max. pressure:	6000 psi	(420 bar)
Max. flow:	40 gpm	(150 l/min)
Leakage at max relief setting ave. :	0.03 gpm	(0.10 l/min)
Special cavity :	065 (see page CT.S.002.U)	
Installation torque :	89-98 ft-lb	(121-133 Nm)
Weight:	0.617 lbs	(0.280 Kg)

Note: suitable for application where "T" line pressure never exceeds "P" line pressure.

Flow is blocked from 1 to 2 until pressure increases to meet the selected valve setting, lifting the pilot-stage ball check from its seat. This action exhausts oil above the main-stage piston (spool type), allowing it to shift and provide relief flow through 2 to tank. Pressure at 2 is additive to the relief setting of the valve.



**X ADJUSTMENTS**

<b>03</b>	Leakproof hex. socket screw	
<b>04</b>	Handknob and locknut	

**SPRINGS**

<b>Z</b>	Adj. press. range psi (bar)	Press. increase psi / turn (bar/turn)	Standard setting psi (bar) (Q=5 l/min)
<b>05</b>	44-1000 (3-70)	290 (20)	725 (50)
<b>10</b>	100-1500 (7-105)	377 (26)	1450 (100)
<b>20</b>	145-3000 (10-210)	508 (35)	2900 (200)
<b>40</b>	500-6000 (35-420)	1668 (115)	5075 (350)

**OPTIONS**

Ordering code	Description
11.04.23.004	Tamper resistant cap

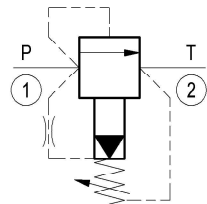
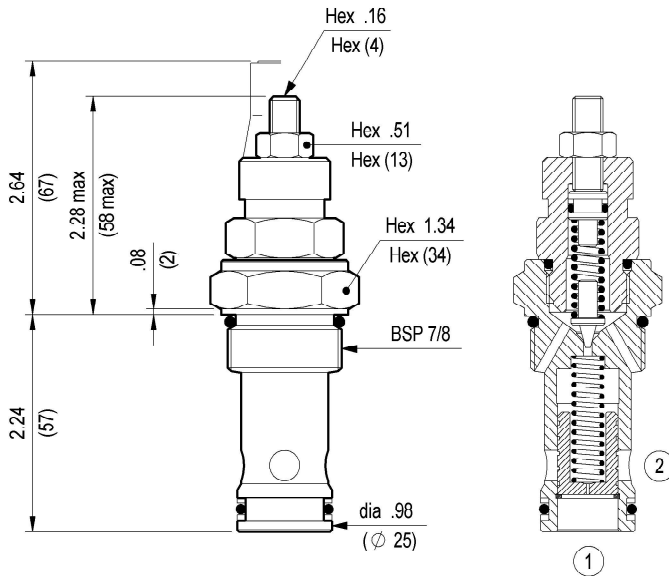
Special settings available. Contact factory authorized representative for ordering code.

**RELIEF, PILOT OPERATED SPOOL TYPE  
SPECIAL CAVITY**



**VSP-180**

**04.12.05 - X - 99 - Z**

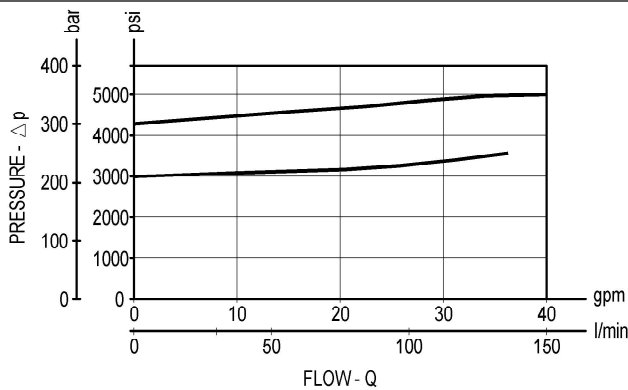


**TECHNICAL DATA**

Max. pressure:	6000 psi	(420 bar)
Max. flow:	40 gpm	(150 l/min)
Max leakage at 90% of std. pressure setting :	0.05 gpm	(0.20 l/min)
Special cavity :	033 (see page CT.S.002.U)	
Installation torque :	89-98 ft-lb	(121-133 Nm)
Weight:	0.706 lbs	(0.320 Kg)

Flow is blocked from 1 to 2 until pressure increases to meet the selected valve setting, lifting the conical, pilot-stage poppet from its seat. This action exhausts oil above the main-stage piston (spool type), allowing it to shift and provide relief flow through 2 to tank. Pressure at 2 is additive to the relief setting of the valve.

Inches  
(mm)



**X ADJUSTMENTS**

**03** Leakproof hex. socket screw



**SPRINGS**

<b>Z</b>	<b>SPRINGS</b>				
	Adj. press. range psi (bar)	Press. increase psi / turn (bar/turn)	Standard setting psi (bar) (Q=5 l/min)	Ordering code	Color
<b>20</b>	1160-3000 (80-210)	1117 (77)	3200 (220)	03.51.01.123	green
<b>35</b>	2900-6000 (200-420)	3263 (225)	5000 (350)	03.51.01.113	yellow

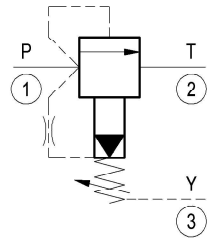
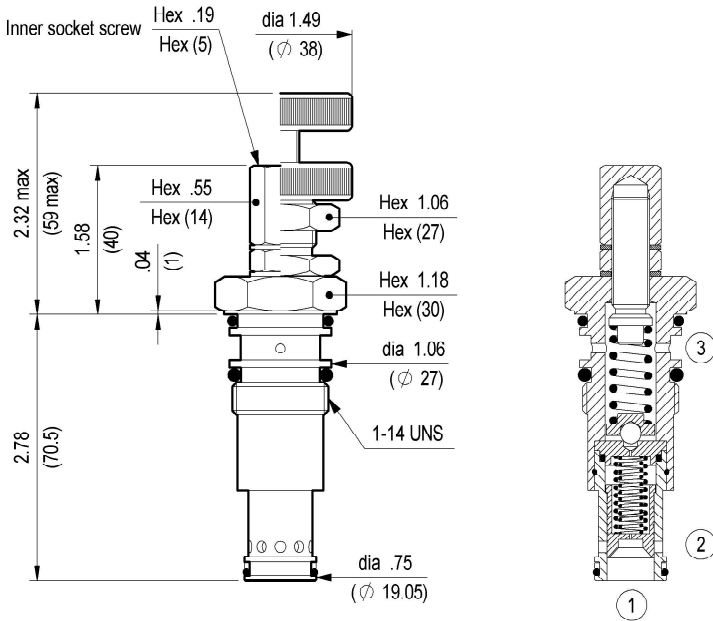
**OPTIONS**

Ordering code	Description
11.04.23.002	Tamper resistant cap
Special settings available. Contact factory authorized representative for ordering code.	

**RELIEF, PILOT OPERATED SPOOL TYPE  
 EXTERNAL DRAIN  
 SPECIAL CAVITY**

**VSP-SD-150**

**04.13.03 - X - 99 - Z**

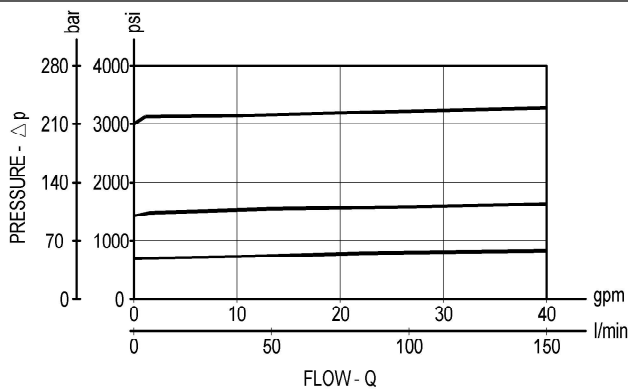


Inches  
(mm)

Flow is blocked from 1 to 2 until pressure increases to meet the selected valve setting, lifting the pilot-stage ball check from its seat. This action exhausts oil above the main-stage piston (spool type), allowing it to shift and provide relief flow through 2 to tank. The spring chamber is drained to tank at 3 allowing a consistent relief setting independent of back-pressure at 2.

**TECHNICAL DATA**

Max. pressure:	3000 psi	(210 bar)
Max. flow:	40 gpm	(150 l/min)
Leakage at max relief setting ave. :	0.03 gpm	(0.10 l/min)
Special cavity :	072 (see page CT.S.002.U)	
Installation torque :	89-98 ft-lb	(121-133 Nm)
Weight:	0.617 lbs	(0.280 Kg)



**X ADJUSTMENTS**

<b>03</b>	Leakproof inner hex. socket screw	
<b>04</b>	Handknob and locknut	

**SPRINGS**

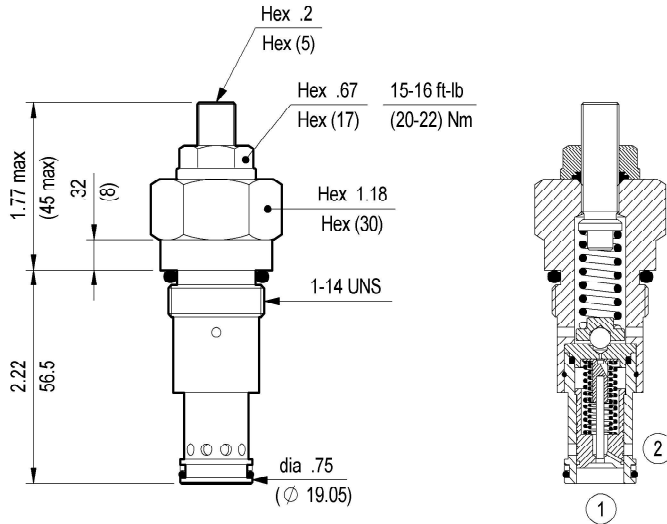
Z	Adj. press. range psi (bar)	Press. increase psi / turn (bar/turn)	Standard setting psi (bar) (Q=5 l/min) (200)
<b>20</b>	145-3000 (10-210)	508 (35)	2900 (200)

**RELIEF, PILOT OPERATED SPOOL TYPE UNLOADING  
SPECIAL CAVITY**



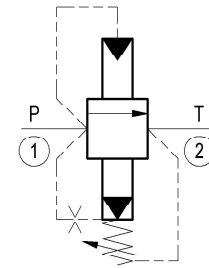
**VSP-PD-150**

**04.19.01 - X - 99 - Z**



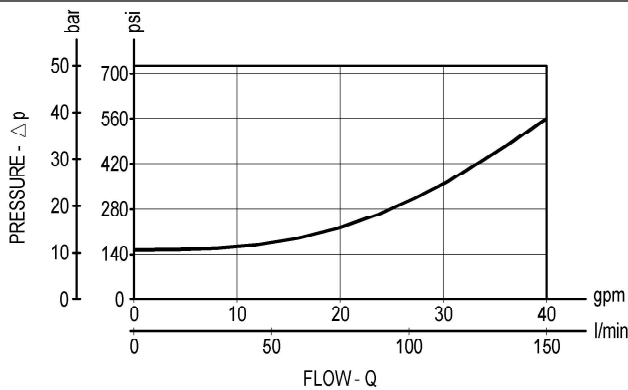
Inches  
(mm)

Flow is blocked from 1 to 2 until pressure increases to meet the selected valve setting, lifting the pilot-stage ball check from its seat. This action exhausts oil above the main-stage piston (spool type), allowing it to shift fully and unload flow from 1 through 2 with minimal pressure drop. The valve is held fully open until flow through the valve ceases. The spring chamber is drained to tank at 2. Any pressure at 4 will be additive to the valve setting.



**TECHNICAL DATA**

Max. pressure:	5000 psi	(350 bar)
Max. flow:	40 gpm	(150 l/min)
Leakage at max relief setting ave. :	0.03 gpm	(0.10 l/min)
Special cavity :	065 (see page CT.S.002.U)	
Installation torque :	89-98 ft-lb	(121-133 Nm)
Weight:	0.617 lbs	(0.280 Kg)



**X ADJUSTMENTS**

**03** Leakproof hex. socket screw



**Z SPRINGS**

Z	Adj. press. range psi (bar)	Press. increase psi / turn (bar/turn)	Standard setting psi (bar) (Q=5 l/min)		
<b>20</b>	145-3000 (10-210)	508 (35)	2900 (200)		

**OPTIONS**

Ordering code	Description
11.04.23.004	Tamper resistant cap



**RELIEF, PILOT OPERATED SPOOL TYPE  
 PRESSURE COMPENSATED  
 SPECIAL CAVITY**

**VSP-CC-150**

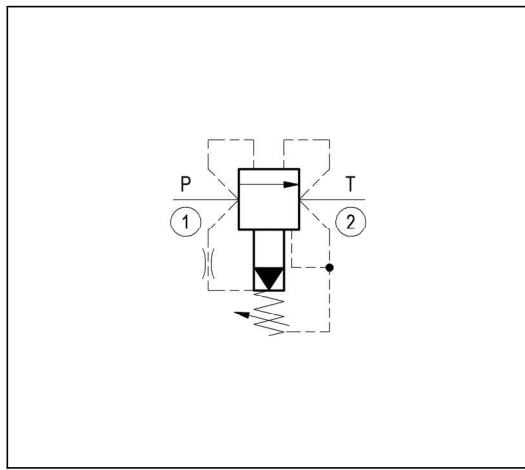
**04.18.01 - X - 99 - Z**

Inner socket screw  
 Hex .2  
 Hex (5)  
 Air Bleed  
 Hex .55  
 Hex (14)  
 Hex .51 15-16 ft-lb  
 Hex (13) (20-22) Nm  
 Hex 1.18  
 Hex (30)  
 1-14 UNS - 2A  
 dia .75  
 (Ø 19.05)

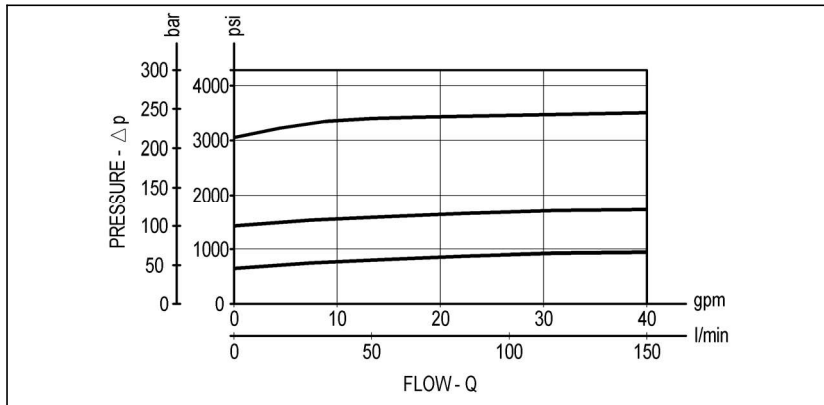
2.17 max  
 (55 max)  
 .32  
 (8)  
 2.22  
 (56.5)

Inches  
 (mm)

Flow is blocked from 1 to 2 until pressure increases to meet the selected valve setting, lifting the pilot-stage ball check from its seat. This action exhausts oil above the main-stage piston (spool type), allowing it to shift and provide relief flow through 2 to tank. Pressure at 2 is additive to the relief setting of the valve. The valve applies a balanced piston design allowing consistent relief operation at the valve setting independent of back-pressure at 2.



TECHNICAL DATA		
Max. pressure:	6000 psi	(420 bar)
Max. flow:	40 gpm	(150 l/min)
Leakage at max relief setting ave. :	0.03 gpm	(0.10 l/min)
Special cavity :	065 (see page CT.S.002.U)	
Installation torque :	89-98 ft-lb	(121-133 Nm)
Weight:	0.617 lbs	(0.280 Kg)



X	ADJUSTMENTS	
03	Leakproof inner hex. socket screw	

Z	SPRINGS		
	Adj. press. range psi (bar)	Press. increase psi / turn (bar/turn)	Standard setting psi (bar) (Q=5 l/min)
20	145-3000 (10-210)	508 (35)	2900 (200)
35	500-6000 (35-420)	1668 (115)	5000 (350)

OPTIONS	
Ordering code	Description
03.05.01.004	 Sealing cap